

WARNING

THIS APPLIANCE WILL NOT OPERATE WITHOUT ELECTRICAL POWER. AS FIRES FREQUENTLY CAUSE POWER INTERRUPTIONS, GENTEX SUGGESTS YOU DISCUSS FURTHER SAFEGUARDS WITH YOUR LOCAL FIRE PROTECTION SPECIALIST.

VI. CLEANING AND MAINTENANCE

Each notification signaling appliance should be maintained in reliable operating condition. Periodic inspections and tests should be made to assure proper operation of the appliances. Visible appliances may require periodic cleaning to remove dust or debris that may have accumulated on the appliance. The frequency of cleaning will depend on the local ambient conditions.

VII. TO RETURN A GXS REMOTE STROBE UNIT

Should you experience problems with your GXS Remote Strobe unit, proceed as follows.

1. Turn off electrical power to the auxiliary alarm circuit.
2. Unscrew the unit from the electrical box.
3. Disconnect the unit from the field wiring. Reconnect the two hot supply voltage circuits (black wires) and the two neutral supply voltage circuits (white wires) for AC Models of the auxiliary alarm circuit to maintain power to the other auxiliary alarm appliances in the system.
4. Carefully pack the defective unit (the manufacturer cannot be responsible for consequential damage due to shipping or mishandling). Include your return address and complete details as to the nature of the difficulties being experienced and date of installation.
5. Return to: Gentex Corporation, 10985 Chicago Drive, Zeeland, MI 49464. Prior to returning, call the Gentex field service department at 1-800-436-8391 or e-mail FP_RMA@gentex.com for a RMA number.

VIII. ELECTRICAL SPECIFICATIONS

WALL STROBE CURRENT RATINGS	
Candela	Regulated 120VAC Max. Operating Current(mA)
177	209

Note: AC Voltage Range Limits: 96-132v. This product was only tested to the stated voltage range; do not apply 80% and 110% of this range for system operation.

LIMITED WARRANTY

For a period of 36 months from the date of purchase, or a maximum of 42 months from the date of manufacture, Gentex warrants to you, the original purchaser, that your appliance will be free from defects in workmanship, materials, and construction under normal use and service. If a defect in workmanship, materials, or construction should cause your appliance to become inoperable within the warranty period, Gentex will repair your appliance or furnish you with a new or rebuilt replacement appliance without charge to you except for postage required to return the appliance to us. Gentex will not reimburse you for repairs or replacement parts provided by other parties. Your repaired or replacement appliance will be returned to you free of charge and it will be covered under this warranty for the balance of the warranty period.

This warranty is void if our inspection of your appliance shows that the damage or failure was caused by abuse, misuse, abnormal usage, faulty installation, improper maintenance, or repairs other than those performed by us.

ANY WARRANTIES IMPLIED UNDER ANY STATE LAW, INCLUDING IMPLIED WARRANTIES OF MERCHANTABILITY OR FITNESS FOR A PARTICULAR PURPOSE, APPLY ONLY FOR THE WARRANTY PERIOD SPECIFIED ABOVE. PLEASE NOTE THAT SOME STATES DO NOT ALLOW LIMITATIONS ON HOW LONG AN IMPLIED WARRANTY LASTS, SO THE ABOVE EXCLUSION MAY NOT APPLY TO YOU.

GENTEX WILL NOT BE LIABLE FOR ANY LOSS, DAMAGE, INCIDENTAL OR CONSEQUENTIAL DAMAGES OF ANY KIND ARISING IN CONNECTION WITH THE SALE, USE OR REPAIR OF THIS APPLIANCE. THE MAXIMUM LIABILITY OF GENTEX SHALL NOT IN ANY CASE EXCEED THE PURCHASE PRICE PAID BY YOU FOR THE APPLIANCE. PLEASE NOTE THAT SOME STATES DO NOT ALLOW THE EXCLUSION OR LIMITATION OF INCIDENTAL OR CONSEQUENTIAL DAMAGES, SO THE ABOVE EXCLUSION MAY NOT APPLY TO YOU.

If a defect in workmanship, materials, or construction should cause your appliance to become inoperable within the warranty period, you must return the appliance to Gentex postage prepaid. You must also prove to the satisfaction of Gentex the date of purchase of your appliance. Warranty service may only be performed by Gentex personnel at Gentex's facilities in Zeeland, Michigan. You must also pack the appliance to minimize the risk of it being damaged in transit. You must also enclose a return address. Appliances returned for warranty service should be sent to: Gentex Corporation, 10985 Chicago Drive, Zeeland, MI 49464. If we receive an appliance in a damaged condition as the result of shipping, we will notify you and you must file a claim with the shipper.

THIS WARRANTY GIVES YOU SPECIFIC LEGAL RIGHTS AND YOU MAY ALSO HAVE OTHER RIGHTS WHICH VARY FROM STATE TO STATE.

Important Notice:

These materials have been prepared by Gentex Corporation ("Gentex") for informational purposes only, are necessarily summary, and are not purported to serve as legal advice and should not be used as such. Gentex makes no representations and warranties, express or implied, that these materials are complete and accurate, up-to-date, or in compliance with all relevant local, state and federal laws, regulations and rules. The materials do not address all legal considerations as there is inevitable uncertainty regarding interpretation of laws, regulations and rules and the application of such laws, regulations and rules to particular fact patterns. Each person's activities can differently affect the obligations that exist under applicable laws, regulations or rules. Therefore, these materials should be used only for informational purposes and should not be used as a substitute for seeking professional legal advice. Gentex will not be responsible for any action or failure to act in reliance upon the information contained in this material.

GENTEX CORPORATION

10985 CHICAGO DRIVE, ZEELAND, MI 49464

PHONE: 800-436-8391

www.gentex.com

6-1-93

Page 4

550-101-T

GENTEX CORPORATION

A Smarter Vision®

GXS REMOTE STROBE

UL 1971 COMPLIANT

SIGNALING



REMOTE VISIBLE SIGNALING APPLIANCE

Installation Instructions-Owner's Information

I. INTRODUCTION

The Gentex model GXS Remote Strobe is a high quality remote visible signaling appliance. The high-intensity strobe utilizes a Xenon flash tube which generates a high-intensity light, visible from all sides of the lens. The GXS Remote Strobe is intended to provide a visible notification signal for the purpose of life safety and property protection. This appliance is ideal for hotels, apartments, hospitals, rest homes or wherever dependable visible alarms are required. This appliance is listed in compliance with UL 1971, Signaling Appliances For The Hearing Impaired.

II. LOCATION

This appliance is intended for use in Fire Alarm Systems and is to be installed in accordance with this installation manual, the recommendation of the local authorities having jurisdiction, and other NFPA Standards that provide standards on notification appliances for protective signaling systems. The Gentex GXS Remote Strobe is intended for indoor installation only and is not listed for outdoor or drip proof applications.

Wall-mounted appliances shall have their bottoms at heights above the finished floor of not less than 80 in. (2m) and no greater than 96 in. (2.4m)**. Spacing shall be in accordance with Table A. If a room configuration is not square, the room size that will entirely encompass the room or subdivide the room into multiple squares shall be used.

WARNING! Visual signal must be in the direct viewing area of the occupant in order to be seen.

WARNING! Visual signal can not be seen when objects such as doors, furniture or walls block visual signal.

NOTICE: Visual signals for the hearing impaired are only one method of alerting the hearing impaired. Visual signals may not be the preferred method for notifying all hearing impaired individuals.

Table A

Room Spacing for Wall-Mounted Visible Appliances per NFPA 72, 2007 Edition				
Maximum Room Size		Minimum Required Light Output (Effective Intensity, Cd)		
Meters	Feet	One Light per Room	Two Lights per Room (Located on Opposite Walls)	Four Lights per Room (One Light per Wall)
6.10 x 6.10	20 x 20	15	NA	NA
8.53 x 8.53	28 x 28	30	Unknown	NA
9.14 x 9.14	30 x 30	34	15	NA
12.2 x 12.2	40 x 40	60	30	15
13.7 x 13.7	45 x 45	75	Unknown	19
15.2 x 15.2	50 x 50	94	60	30
16.5 x 16.5	54 x 54	110	Unknown	30
16.8 x 16.8	55 x 55	115	Unknown	28
18.3 x 18.3	60 x 60	135	95	30
19.2 x 19.2	63 x 63	150	Unknown	37
20.7 x 20.7	68 x 68	177	Unknown	43
21.3 x 21.3	70 x 70	184	95	60
24.4 x 24.4	80 x 80	240	135	60
27.4 x 27.4	90 x 90	304	185	95
30.5 x 30.5	100 x 100	375	240	95
33.5 x 33.5	110 x 110	455	240	135
36.6 x 36.6	120 x 120	540	305	135
39.6 x 39.6	130 x 130	635	375	185

NA = Not Allowable

****Effective Intensity Requirements for Sleeping Area**

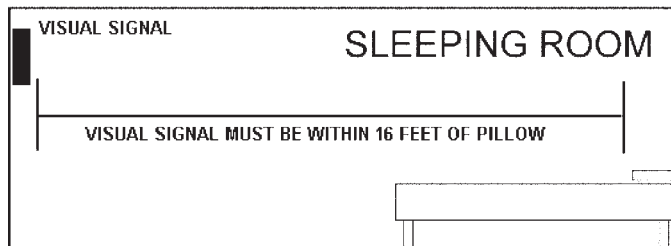
Visible Notification Appliance	
Distance from Ceiling to Top of Lens	Intensity
greater than or equal to 24" (610mm)	110 Cd
less than 24" (610mm)	177 Cd

WARNING! Visual signal must be installed within 16 feet of the pillow when used in a sleeping area.

550-0101

Page 1

WARNING! Visual signal must be installed within 16 feet of the pillow when used in a sleeping area.



WARNING! Visual signal must be in the direct viewing area of the occupant in order to be seen.

WARNING! Visual signal can not be seen when objects such as doors, furniture or walls block visual signal.

NOTICE: Visual signals for the hearing impaired are only one method of alerting the hearing impaired. Visual signals may not be the preferred method for notifying all hearing impaired individuals.

NOTICE: The visual signal must be seen by the sleeping person. If the person has head turned or otherwise unable to be alerted by visual, the visual signal will not be effective.

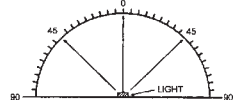
WARNING Visual Signal should NEVER be relied upon as the primary fire alert for the hearing impaired under these common sense conditions:

- Sleeping face down on the bedding or pillow
- Use of sleep medications of any kind
- Use of alcoholic beverages or recreational drugs
- Use of eye shades
- If there are tendencies of deep sleep conditions
- If a fire cuts power to AC circuits, the visual signal will not operate.
- If person is not within line of sight of visual signals

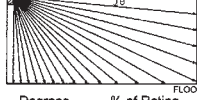
Under these and other similar common situations an alternate fire alert method such as a non-hearing impaired attendant is needed. The visual signal only increases the chance of being alerted to the presence of fire. No system of this type can fully protect the hearing impaired in case of fire.

LIGHT OUTPUT IN PERCENTAGE WHEN MEASURED FROM THE FOLLOWING DIRECTIONS - PER UL1971

wall and ceiling mount horizontal dispersion
ceiling mount vertical dispersion



wall mount vertical dispersion



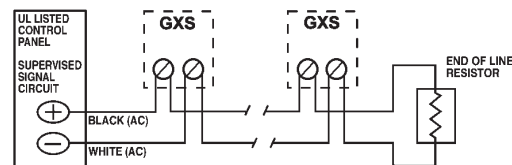
III. MOUNTING ROUGH-IN BOX AND RUN WIRING

The GXS Remote Strobe is designed for mounting to most single and double gang electrical boxes. Conduit entrance to boxes should be selected to insure sufficient wiring clearance.

- Mount a box for each remote signaling device.
- Run a minimum 16-gauge insulated, 2-conductor cable for AC strobes.

NOTICE: All visual signals are designed to flash as specified with continuous applied voltage. This appliance is not recommended for use on coded or pulsing signaling circuit.

WIRING DIAGRAM



NOTE: VOLTAGE SUPPLIED TO GXS SIGNAL WHEN PANEL IS LATCHED.

CAUTION
EACH WIRE RUN MUST BE BROKEN TO PROVIDE SUPERVISION OF SIGNAL CIRCUIT.

IV. MOUNT ADAPTER PLATE, CONNECT WIRES AND INSTALL UNIT

Depending on the type of electrical box installed, the GXS Remote Strobe unit can be mounted directly to the box, or by using the mounting adapter plate provided. (See Figures A and B.)

- If needed, secure the mounting adapter plate to the electrical box. Use screws provided with electrical box. **IMPORTANT:** Mounting plate is marked "THIS SIDE OUT" and slotted for proper positioning.
- The GXS Remote Strobe has two terminals for power-in and power-out supply circuits. For each terminal, one is for the incoming circuit and one is for the outgoing circuit.
- Make wire connections as follows: hot to + and neutral to - for AC models.
- Secure the GXS Remote Strobe to the electrical box with two of the screws provided. Use the longer screws for direct mounting and the shorter screws for attachment to the mounting plate.

CAUTION
WHEN INSTALLING, ROUTE FIELD WIRING AWAY FROM SHARP PROJECTIONS, CORNERS AND INTERNAL COMPONENTS.

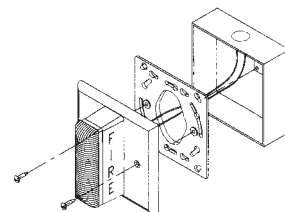


FIG. A

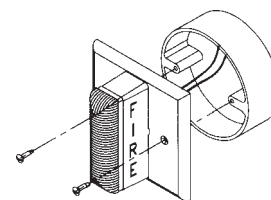


FIG. B

WARNING
FAILURE TO OBSERVE ANY OF THE CONDITIONS SET FORTH MAY CAUSE MALFUNCTION AND DAMAGE TO THE APPLIANCE.

V. CHECKOUT AND TROUBLESHOOTING

- Supply power to the system control panel. The auxiliary signaling appliances in the system should not be activated.
- If the signal is activated:
 - Check all smoke alarms and fire detectors in the system to make sure they have not been activated.
 - Check all wiring connections to make sure the signal detection circuits are not reversed or shorted together. Check wire color codes and traces.
- To test the GXS Remote Strobe and other signaling appliances, trip the auxiliary panel or activate alarm circuit at the main control panel or activate one of the fire detection units in the system. All auxiliary signals should be activated.
- An operational test on this product should be conducted in accordance with National Standards or at a minimum annually and more often if dictated by local and state codes or authorities having jurisdiction.

NOTE: These testing and troubleshooting instructions are generalized. Please refer to the system control panel operating instructions for proper operation of the panel and fire detection system.